

Errata Sheet

A Case-Based Approach to Pacemakers, ICDs, and Cardiac Resynchronization (2-Volume Set): Introductory AND Advanced Questions for Examination Review and Clinical Practice

Description of errors and their resolution are noted below. PDFs of the corrected pages are also available at <http://www.cardiotextpublishing.com/titles/detail/9781935395454> or at each volume's web page as noted below.

A Case-Based Approach to Pacemakers, ICDs, and Cardiac Resynchronization: Questions for Examination Review and Clinical Practice [Volume 1]

ISBN: 978-1-935395-43-0

<http://www.cardiotextpublishing.com/titles/detail/9781935395430>

Case #4, page 16

In **case #4**, the correct answer is #2, which in the text of the question reads "Surface ECG displaying artifact" While the book correctly notes that #2 is the right answer, the text (title) of the answer has an error in that it states "2. Surface ECG displaying atrial flutter" This is not correct. It should read "2. Surface ECG displaying artifact." It is displaying artifact (as noted in the first sentence of the explanation). Note that while the surface ECG has deflections that mimic flutter due to tremor, the atrial lead does not sense these at all, and they are not seen on the atrial electrogram (figure 4.3).

A Case-Based Approach to Pacemakers, ICDs, and Cardiac Resynchronization : Advanced Questions for Examination Review and Clinical Practice [Volume 2]

ISBN: 978-1-935395-44-7

<http://www.cardiotextpublishing.com/titles/detail/9781935395447>

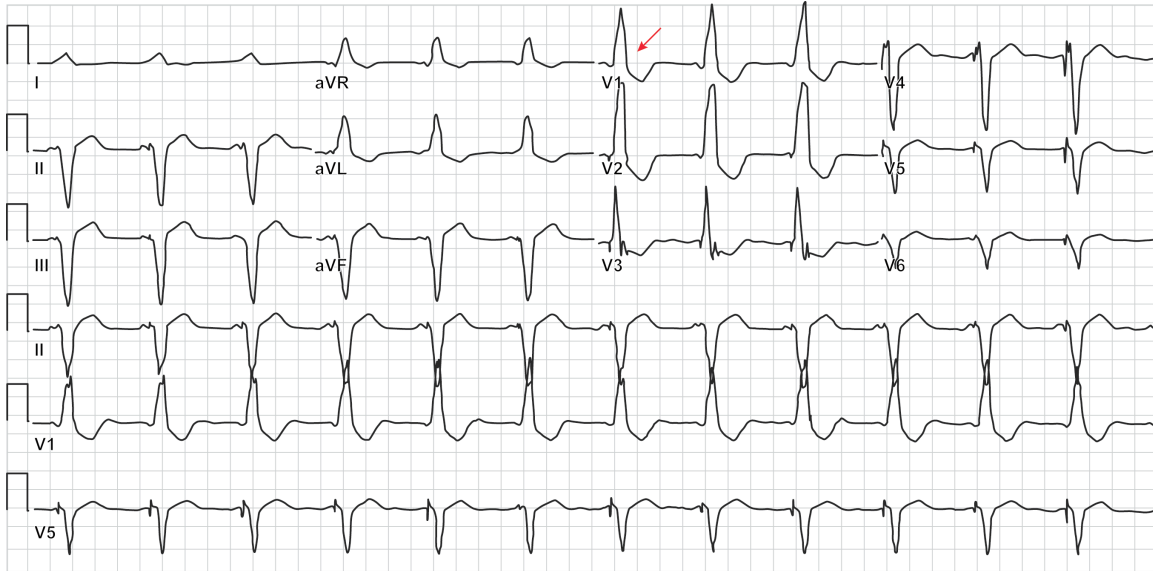
Case #59, page 106

As for **question 59.4**, the correct answer is #3 -- "The defibrillator lead is likely near the tricuspid annulus." The posted answer is incorrect. Because the lead is near the annulus, both atrial and ventricular signals are sensed by the ventricular lead, leading to double counting. There is no atrial fibrillation seen (#2 is not correct), and the reason #1 and #4

are not correct is explained in the text.

Case #63, page 161

In **Figure 63.3**, the wrong ECG was used in the image, so that the questions and discussion cannot be followed. The correct image is noted below:



Case #65, pages 201-211

Please check web site for updates to **Case #65**. Figure 65.7 is a newly inserted graphic that causes an image shift to the end of the chapter.

9/21/11