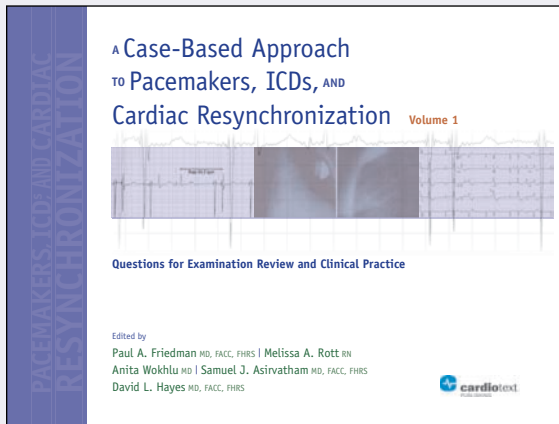


A Case-Based Approach to Pacemakers, ICDs, and Cardiac Resynchronization

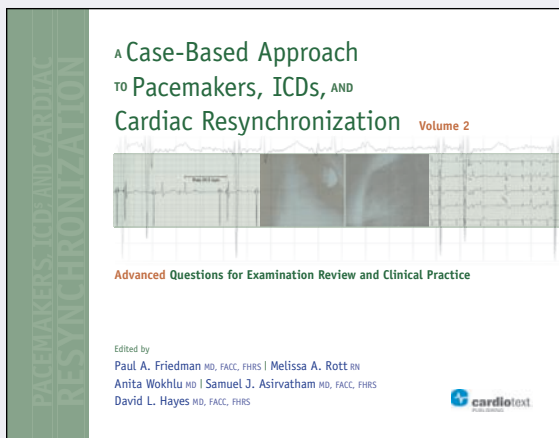
Paul A. Friedman MD | Melissa A. Rott RN | Anita Wokhlu MD | Samuel J. Asirvatham MD | David L. Hayes MD



These books are for any individual who sees patients with implantable devices, or who will be taking an examination related to device management.

Many caregivers working in the field of medicine find that one of the best ways to learn is by working through clinical cases and for many individuals it's even more helpful to work through the examples as unknowns. This is especially true in the arena of implantable cardiac devices, that is, devices for the management of congestive heart failure.

In an effort to provide this experience, experts from the Mayo Clinic, Rochester, MN, have produced two volumes of case studies that encompass variations of normal and abnormal function of pacemakers, ICDs, and CRT devices.



The texts have been written collaboratively by 5 clinicians with differing backgrounds in an effort to present the cases in such a way that they are applicable to a variety of caregivers. Cases for this book were selected based on clinical relevance, and their usefulness for illustrating general principles, practical tips, or interesting findings in device practice, with a goal of advancing general concepts in device management.

The first volume includes introductory and intermediate level difficulty cases. The second volume includes additional intermediate cases as well as advanced/multipart cases. Electronic versions of this book will be made available with additional features to facilitate navigation of the clinical material.

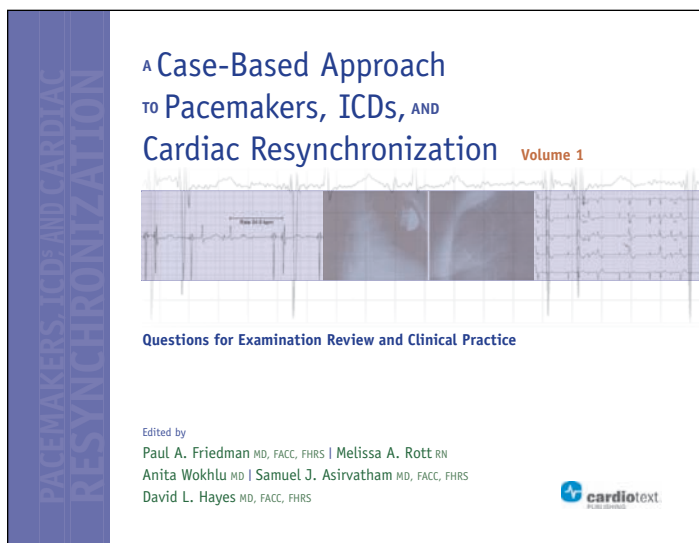
Paul A. Friedman, MD, FACC, FHRS, Consultant, Division of Cardiovascular, Diseases Mayo Clinic, Rochester, Minnesota; Professor of Medicine, College of Medicine, Mayo Clinic

Melissa A. Rott, RN, Heart Rhythm Services, Division of Cardiovascular Diseases, Mayo Clinic, Rochester, Minnesota

Anita Wokhlu, MD, Fellow in Electrophysiology, Mayo School of Graduate Medical Education, College of Medicine, Mayo Clinic, Rochester, Minnesota; Assistant Professor of Medicine, College of Medicine, Mayo Clinic

Samuel J. Asirvatham, MD, FACC, FHRS, Consultant, Divisions of Cardiovascular Diseases and Pediatric Cardiology, Mayo Clinic, Rochester, Minnesota; Professor of Medicine and of Pediatrics, College of Medicine, Mayo Clinic

David L. Hayes, MD, FACC, FHRS, Consultant, Division of Cardiovascular Diseases, Mayo Clinic, Rochester, Minnesota; Professor of Medicine, College of Medicine, Mayo Clinic



A Case-Based Approach to Pacemakers, ICDs, and Cardiac Resynchronization: Questions for Examination Review and Clinical Practice [Volume 1]

Publisher: Cardiotext Publishing

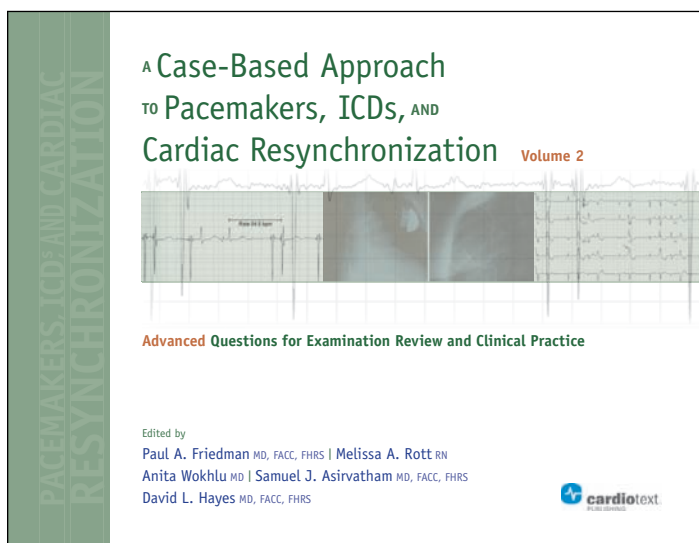
Price: \$99.00

Publication Date: May 2011

ISBN: 978-1-935395-43-0

Book Info: 11" x 8.5" hardcover, 232 pages, 45 cases

Web: <http://www.cardiotextpublishing.com/titles/detail/9781935395430>



A Case-Based Approach to Pacemakers, ICDs, and Cardiac Resynchronization: Advanced Questions for Examination Review and Clinical Practice [Volume 2]

Publisher: Cardiotext Publishing

Price: \$99.00

Publication Date: May 2011

ISBN: 978-1-935395-44-7

Book Info: 11" x 8.5" hardcover, 232 pages, 20 cases

Web: <http://www.cardiotextpublishing.com/titles/detail/9781935395447>

2-Volume Set

ISBN: 978-1-935395-45-4

Price: \$169.00

For industry orders, inquiries, or quantity discounts, please contact Cardiotext Publishing:

Caitlin Crouchet
caitlin.crouchet@cardiotext.com
1-888-999-9174